

Sight-reading Criteria for Orchestra

Level I - II

Key

- Concert D, G Major (and C Major for full orchestra).
- No key change.

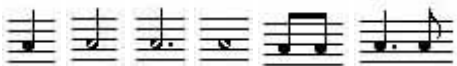
Meter:



Maximum of two meter changes.

Rhythm:

BASIC PATTERNS:



Length:

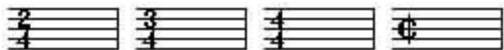
Maximum of three (3) minutes (single movement piece or both movements of a two movement piece).

Level III - IV

Key

- Concert D, G, C Major (and F Major for full orchestra) / b, a, e minor
- Maximum of two (2) keys changes.

Meter



Maximum of two (2) meter changes.

Rhythm

BASIC PATTERNS:



Length

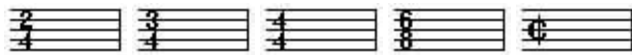
Maximum of four (4) minutes (can be multi-movement).

Level V - VI

Key

- Concert D, G, F, C, Bb Major / b, e, d, a, g minor.
- Maximum of three (3) key changes.

Meter



Maximum of three (3) meter changes.

Rhythm

BASIC PATTERNS:



Length

Maximum of five (5) minutes (can be multi-movement).